



KC 2 - H - Beam Cutting



Main Applications

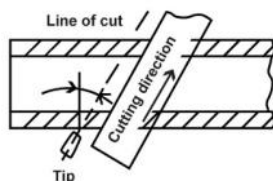
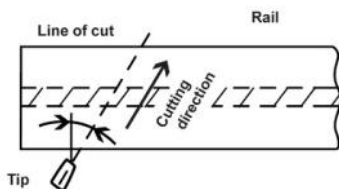
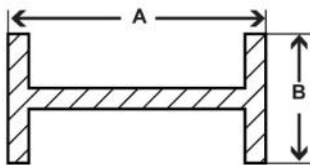
- Shipyard
- Fabricator
- Steel Contractor

Advantageous

- Grouping control buttons on the control panel for easy operation
- SCR control system for smooth and continuous cutting
- Clutch system, for easy positioning and alignment
- With a quick valve for fast and easy operation
- Can cut diagonal, normal, bevel and even plate cuts
- Easy mounting for unit machine onto rail with easy clamping

Specifications

Cutting width	150 - 800 mm (A)
Cutting height	150 - 400 mm (B)
Cutting thickness	6 - 60 mm
Cutting speed	50 - 750 mm/min
Diagonal web cutting	35° at 400 mm max. web cutting
Bevel cutting	35° for both web flanges
Input phase	1 Phase
Motor input voltage	220 VAC, ± 10 %
Dimension (L x W x H)	250 x 176 x 260 mm
Weight	20 Kg



Item Code	Item Name	MoQ
101.11.006.1	KC 2 - H - Beam Cutting Package	1 Set
	• Cable connection - 1 pcs	
	• Cutting torch - 1 pcs	
	• Aluminum track rail - 1 pcs	
	• Spanner 15 & 20 - 1 pcs	
	• Spanner 17 & 24 - 1 pcs	
	• Tip cleaner - 1 pcs	
	• Gas cutting nozzle - No. 1, 2, 3 for LPG - 1 pcs	

Standard Accessories

101.11.006	KC 2 - H - Beam Cutting	1 Unit
201.23.006	Oxygen Gas Regulator	1 Pcs

Standard Alternative

201.23.008	LPG Gas Regulator	1 Pcs
201.23.007	Acetylene Gas Regulator	1 Pcs

Optional Accessories

201.25.001	Gas Cutting Nozzle - No. 00 - Acetylene	1 Pcs
201.25.002	Gas Cutting Nozzle - No. 0 - Acetylene	1 Pcs
201.25.003	Gas Cutting Nozzle - No. 1 - Acetylene	1 Pcs
201.25.004	Gas Cutting Nozzle - No. 2 - Acetylene	1 Pcs
201.25.005	Gas Cutting Nozzle - No. 3 - Acetylene	1 Pcs
201.25.006	Gas Cutting Nozzle - No. 4 - Acetylene	1 Pcs
201.25.007	Gas Cutting Nozzle - No. 5 - Acetylene	1 Pcs
201.25.008	Gas Cutting Nozzle - No. 00 - LPG	1 Pcs
201.25.009	Gas Cutting Nozzle - No. 0 - LPG	1 Pcs
201.25.010	Gas Cutting Nozzle - No. 1 - LPG	1 Pcs
201.25.011	Gas Cutting Nozzle - No. 2 - LPG	1 Pcs
201.25.012	Gas Cutting Nozzle - No. 3 - LPG	1 Pcs
201.25.013	Gas Cutting Nozzle - No. 4 - LPG	1 Pcs
201.25.014	Gas Cutting Nozzle - No. 5 - LPG	1 Pcs