

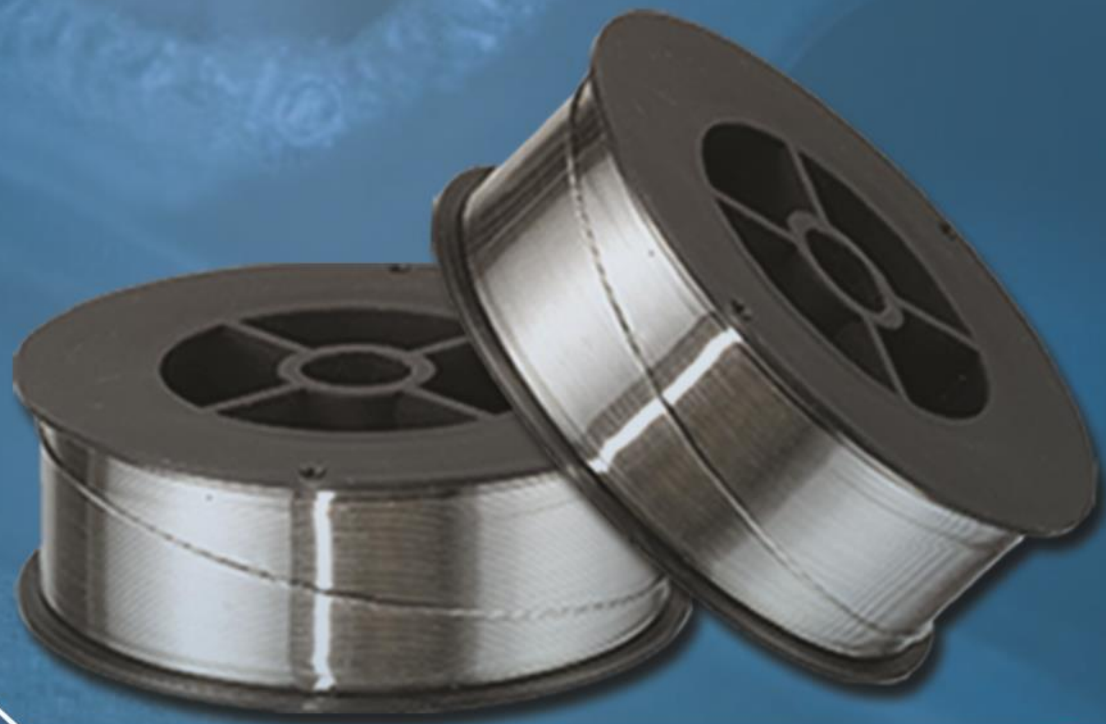


PT. Bumi Teknik Utama
PROFESSIONAL INDUSTRIAL EQUIPMENTS

Jakarta
Semarang
Surabaya
Balikpapan



Product Catalog
2019 - 2020 *Version 3*



E

WELDING CONSUMABLES

Our Company

Established in 1968 as CV. Timur Raya, and later renamed to PT. Bumi Teknik Utama in 2004, with offices in Jakarta, Semarang, Surabaya, and Balikpapan. Our divisions are Welding Machines division, Welding Accessories division, Welding Consumable division, Tools & Power Tools division, Panel & Hand Tools, Retail division and Service & Support division.

In order to serve our customers better, we established Bumi Distribution Center in Cengkareng and we are planning to open more branches in different provinces and cities in the nationwide.

More than 50 years of industrial experience and utilizing a strong backbone of the latest computerized system, such as online "SAP" ERP system, Business Intelligence and Bumi Intranet, give us the advantageous of fast working collaboration, knowledge, analyze and expertise that contributes greatly to the benefit of our customers.

As one of the fastest growing companies in the industry, we believe Human Capital is one of the company's main pillars. Which we pay lots of attention and investment in the recruitment and talent development program.

Our Customers : Metal Fabricators, Automotive Industry, Shipyard, Power Plant, Mechanical & Electrical, Oil, Gas, Mining and all related supporting Industries.

Our Products : High quality and reliable lifting, cutting, bevelling, grinding, welding, drilling, punching, bending, fastening and related products.



Our Vision : To be the leader in the professional industrial equipments by giving quality products and better after sales services.

Our Mission : To equip our Customers with reliable, durable and efficient Professional Industrial Equipments. Together with preventive and corrective services that fulfill the needs and expectations of our customers and business partners.

Our Core values :

- Treating our customers with respect and faith.
- We grow through creativity, invention and innovation
- We integrate honesty, discipline and commitment into all business aspects.

Stay connected with us :

 Website : www.bumi.info
www.bumiservice.co.id

 Youtube : bumi.info

 Facebook : bumi.info.jakarta
bumi.info.semarang
bumi.info.surabaya
bumi.info.balikpapan

 Instagram : bumi.info

 Linked-In : bumi.info

 Twitter : bumi.info



CONTENT

Group Name	Brand	Item Name	Page
Welding Wire	KOBEWEL	Flux Cored Wire - E71T-1, Ø 1.2 mm	A 1



Flux Cored Wire - E71T-1, Ø 1.2 mm



- E71T-1 is an all-position rutile flux cored wire designed to be used with CO² gas. It can be used on all-position welds with both single and multiple pass welds on mild steel and low alloy steels
- It is widely used for shipbuilding, storage vessels, structural fabrication, machinery and piping, etc.

NOTE ON USAGE :

1. Use DC (+) polarity.
2. Maintain a higher welding speed in order to get enough penetration in the down hand welding position.

Standard Designation to :	
AWS A5.20	E71T-1
JIS Z3313	YFW -C50DR
GB	E501T-1
ABS, BV, DNV-GL, LR, RINA, NK, CCS	

Average Analysis of Wire (wt%) :	
Weld Metal Analysis :	
Carbon (C)	≤ 0.18
Manganese (Mn)	≤ 1.75
Silicon (Si)	≤ 0.90
Phosphorus (P)	≤ 0.030
Sulphur (S)	≤ 0.030

Mechanical Properties of all-weld metal	
Yield Strength	≥ 375 N/mm ²
Tensile Strength	490 - 660 N/mm ²
Impact Strength (IV) (-20°C)	78 J min
Elongation	≥ 22 %

SUGGESTED WELDING PARAMETERS	
Parameter	Diameter 1.2
Voltage (Volt)	25 ~ 40
Current (Amp)	130 ~ 300
W.F.S. (cm/min)	460 ~ 1000
Stickout (mm)	15 ~ 20
Flow Rate (l / min)	15 ~ 25

Item Code	Item Name	Pack	Roll	Kg
301.01.001	Flux Cored Wire - E71T-1, Ø 1.2 mm	1 box	1 roll	15 Kg
		1 pallet	72 rolls	1080 Kg

Certificate



Jakarta Head Office :

Jl. Pangeran Jayakarta 141, Block II No. C 4 & 5, Jakarta 10730
Telephone : +62 - 21 - 600 8460
Fax : +62 - 21 - 624 4405, 649 0759
Tools & Power Tools Division : tools@bumiteknik.co.id
Panel & Hand Tools Division : pht@bumiteknik.co.id
Welding Machine Division : welding.machine@bumiteknik.co.id
Welding Accessories Division : welding.accessories@bumiteknik.co.id
Welding Consumable Division : welding.consumable@bumiteknik.co.id
Retail Division : retail@bumiteknik.co.id
Service Division : service.jkt@bumiservice.co.id

Semarang Branch Office :

Jl. Cendrawasih No. 8B
Semarang 50138
Telephone : +62 - 24 - 358 5809
Fax : +62 - 24 - 354 6278
Sales : bumi.smg@bumiteknik.co.id
Retail : retail.smg@bumiteknik.co.id
Service : service.smg@bumiservice.co.id

Surabaya Branch Office :

Jl. Saroni Jiwo No. 4 , Surabaya 60299
Telephone : +62 - 31 - 847 5608
Fax : +62 - 31 - 841 1736
Tools & Power Tools Division : tools.sby@bumiteknik.co.id
Panel & Hand Tools Division : pht.sby@bumiteknik.co.id
Welding Machine Division : welding.machine.sby@bumiteknik.co.id
Welding Accessories Division : welding.accessories.sby@bumiteknik.co.id
Welding Consumable Division : welding.consumable.sby@bumiteknik.co.id
Retail Division : retail.sby@bumiteknik.co.id
Service Division : service.sby@bumiservice.co.id

Balikpapan Branch Office :

Jl. Letkol Pol. H.M. Asnawi Arbain, Ruko Rubiz No. 39
Balikpapan Selatan 76115
Telephone : +62 - 542 - 771 728
Fax : +62 - 542 - 763 968
Sales : bumi.bpp@bumiteknik.co.id
Retail : retail.bpp@bumiteknik.co.id
Service : service.bpp@bumiservice.co.id

Bumi Service Center :

Jl. Raya Kamal No. 9, Unit G,
Jakarta Barat 11820
Telephone : +62 - 21 - 2255 3967
Fax : +62 - 21 - 2255 8374
Service Division : service.jkt@bumiservice.co.id

Bumi Distribution Center :

Jl. Raya Kamal No. 9, Unit C - Unit D,
Jakarta Barat 11820
Telephone : +62 - 21 - 555 8228
Fax : +62 - 21 - 2255 3921



website : www.bumi.info
www.bumiservice.co.id



Facebook : [bumi.info jakarta](https://www.facebook.com/bumi.info.jakarta)
[bumi.info semarang](https://www.facebook.com/bumi.info.semarang)
[bumi.info surabaya](https://www.facebook.com/bumi.info.surabaya)
[bumi.info balikpapan](https://www.facebook.com/bumi.info.balikpapan)



Youtube : [bumi.info](https://www.youtube.com/bumi.info)



Instagram : [bumi.info](https://www.instagram.com/bumi.info)



Linked-In : [bumi.info](https://www.linkedin.com/bumi.info)



Twitter : [bumi.info](https://twitter.com/bumi.info)