



Welding Accessories

High quality welding accessories provide the best welding results

| Item Code | Item Name | Ø | Max. Amp. | MoQ |
|--------------|--|-------|-----------|--------|
| 250.01.009.1 | Panel Socket - Standard - Trak-BE 35-50 mm - 2 Pcs | 38 mm | 400 A | 1 Pack |



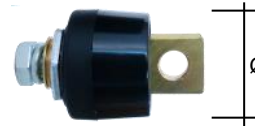
| Item Code | Item Name | Ø | Max. Amp. | MoQ |
|--------------|--|-------|-----------|--------|
| 250.01.010.1 | Panel Socket - High - Trak-BE 35-50 mm - 2 Pcs | 49 mm | 400 A | 1 Pack |



| Item Code | Item Name | Ø | Max. Amp. | MoQ |
|--------------|---|-------|-----------|--------|
| 250.01.013.1 | Panel Lug - Standard - 35-50 mm - 2 Pcs | 38 mm | 400 A | 1 Pack |



| Item Code | Item Name | Ø | Max. Amp. | MoQ |
|--------------|-------------------------------------|-------|-----------|--------|
| 250.01.011.1 | Panel Lug - High - 50-70 mm - 2 Pcs | 49 mm | 500 A | 1 Pack |
| 250.01.012.1 | Panel Lug - High - 70-95 mm - 2 Pcs | 49 mm | 600 A | 1 Pack |



| Item Code | Item Name | Ø | Max. Amp. | MoQ |
|--------------|--------------------------------|-------|-----------|--------|
| 250.01.002.1 | Socket Female 35-50 mm - 2 Pcs | 21 mm | 250 A | 1 Pack |
| 250.01.003.1 | Socket Female 50-70 mm - 2 Pcs | 21 mm | 400 A | 1 Pack |
| 250.01.004.1 | Socket Female 70-95 mm - 2 Pcs | 24 mm | 500 A | 1 Pack |



| Item Code | Item Name | Ø | Max. Amp. | MoQ |
|--------------|----------------------------|-------|-----------|--------|
| 250.01.005.1 | Plug Male 10-25 mm - 2 Pcs | 21 mm | 250 A | 1 Pack |
| 250.01.006.1 | Plug Male 35-50 mm - 2 Pcs | 21 mm | 400 A | 1 Pack |
| 250.01.007.1 | Plug Male 50-70 mm - 2 Pcs | 24 mm | 500 A | 1 Pack |
| 250.01.008.1 | Plug Male 70-95 mm - 2 Pcs | 24 mm | 500 A | 1 Pack |



| Item Code | Item Name | MoQ |
|------------|---|------|
| 208.18.001 | DACH Welding Torch Holder for TIG Torch | 1 Pc |
| 208.18.002 | DACH Welding Torch Holder for MIG Torch | 1 Pc |



| Item Code | Item Name | MoQ |
|------------|---------------------------------------|------|
| 208.16.002 | DACH Ground Clamps, Capacity 300 Amps | 1 Pc |
| 208.16.003 | DACH Ground Clamps, Capacity 400 Amps | 1 Pc |
| 208.16.004 | DACH Ground Clamps, Capacity 600 Amps | 1 Pc |



| Item Code | Item Name | MoQ |
|------------|---|------|
| 204.64.001 | Binzel Flow Meter, Flow rate 0 up to 20 L/min | 1 Pc |



| Item Code | Item Name | MoQ |
|------------|-------------------------|------|
| 201.39.001 | Electrode Holder, 400 A | 1 Pc |
| 201.39.002 | Electrode Holder, 600 A | 1 Pc |



| Item Code | Item Name | MoQ |
|------------|---|------|
| 204.64.002 | Binzel Multi Purpose Spanner for Mig Torch & Plasma Cutting Torch | 1 Pc |
| 204.64.003 | Binzel Spanner for All Mig Torch | 1 Pc |

